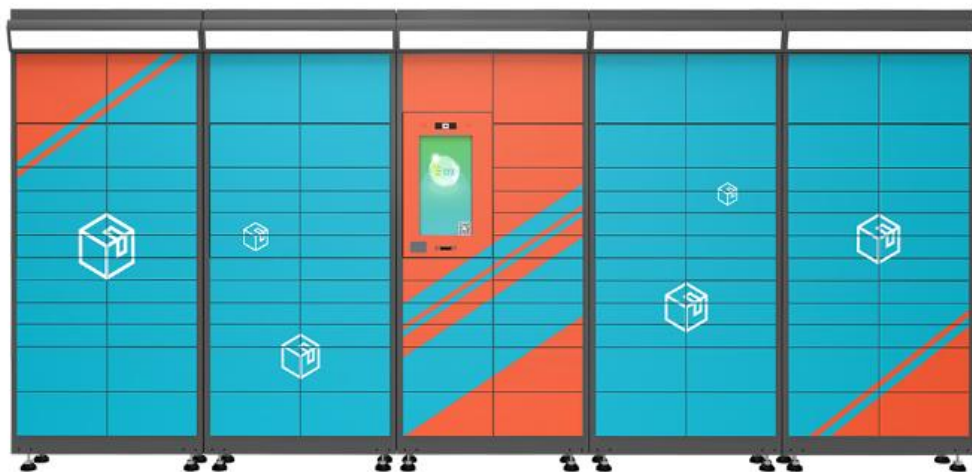


# TDS1039H(1000nits)

Open-Frame touchscreen Monitor



## Features

- + Zero bezel, open-frame structure
- + Front panel and touchscreen sealing
- + 1000nits high brightness LCD
- + Resolution 1280X800@60Hz
- + 10-touch Projected Capacitive touchscreen
- + Anti-UV optical adhesive bonding
- + Anti-glare surface treatment on the cover
- + Onboard light sensor function(optional)
- + Brightness changes with ambient light
- + Temperature control cooling fan module
- + Video interface: HDMI+VGA
- + Reserve side and back assembly holes
- + Easy to remove OSD, easy to update
- + Support OS: Windows/Android/Linux
- + 2-year Warranty

## Optional:

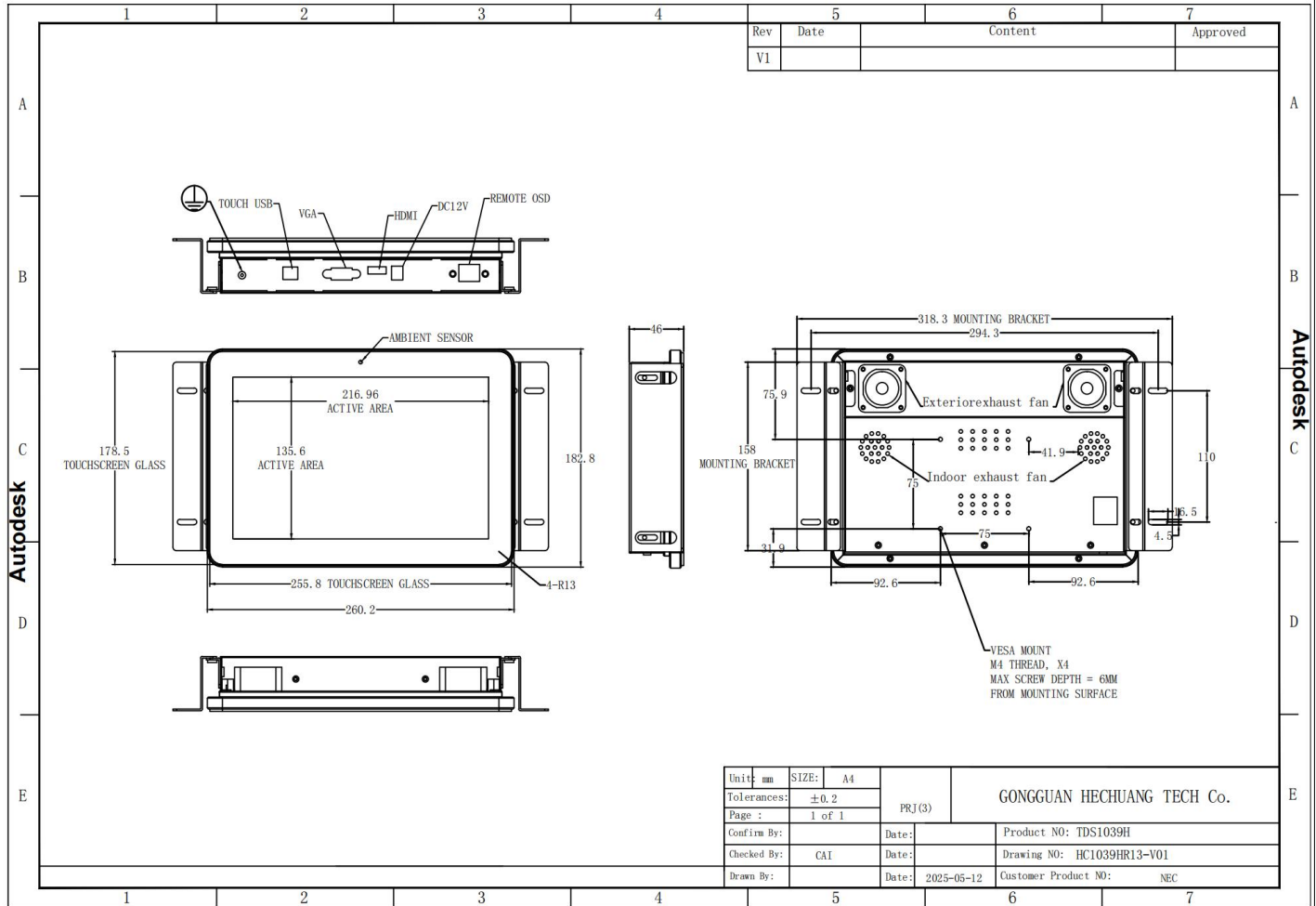
- No touchscreen
- Infrared sunscreen film
- Brightness: 700-1200nits
- Video interface: DP
- ALL-IN-ONE(Android/Windows)



1039H High Brightness Open-Frame Touchscreen Monitor	
Diagonal	10.1" (16:10)
Color	Metal silver
Active Area	216.96(W)×135.6(H) mm
Native Resolution	1280X800@60Hz
Number of Colors	16.2 msec
Viewing Angle	Horizontal: 85°/170°; Vertical: 85°/170°
Contrast Ratio	800:1
Brightness	LCD: 1000nits; Touchscreen: 900nits
Light sensor (Optional)	Automatically adjust the brightness of the screen according to the ambient light. *When the ambient light is weak, it will automatically reduce the brightness of the display to avoid excessive glare and save energy. *When the ambient light is strong, the display brightness will be automatically enhanced to make the content clearly visible.
Response	25ms
Number of Touches	PCAP - 10 Touch
Glass treatment	AG coating
Touch Accuracy	≤2mm
I/O Interface	1*USB(touchscreen),1*HDMI,1*VGA,1*DC,1*RJ45 OSD
Input Voltage	AC: 100-240 VAC,50/60 Hz; +12VDC +/- 5%
Power Supply	12V5A(Power Jack : 2.1mmx5.5mm)
Power Consumption (Typical)	ON (Typical - 100% Brightness): 21W SLEEP FROM PC (monitor + adapter): 1.5 W
Cooling method	Cooling fan set
Temperature control	The fan speed will be controlled based on the internal temperature to achieve cooling function; (accuracy: ≤2°C) *When the internal temperature reaches > 30°C, start the fans. *When the temperature drops <30°C,stop the fans.
Temperature	Operating: 0°C-50°C; Storage: -20°C-70°C
Humidity	Operating: 20%-70%; Storage: 10%-80%
Mounting Options	Back VESA holes : 75mmX75mm
MTBF	50,000 hours
Dimensions	260.2X178.5X46(mm)
Weight(net.)	2KG
Warranty	2-year
Support OS	Windows/Linux\Android
Agency Approvals	FCC; CE; ROHS;
What's in the Box	1*USB cable, 1*HDMI cable, 1*Power adapter, 1*DC cable, 1*RJ45 OSD Remote
<b>Notes:</b>	
<p>1.Recommend customers to use light sensors to effectively save energy and extend backlight life</p> <p>2.If conditions allow, please avoid installing the product in an area exposed to direct sunlight. Use cantilevers or point products away from sunlight to reduce environmental stress on the product and extend its life.</p> <p>3.Please maintain good ventilation on the back of the monitor and do not block the heat dissipation holes and fan blades.</p>	

## TDS1039H-1000nits

Autodesk



Dimensions are in millimeters

Autodesk

